

Illustration - Type - E

3 601 F20 100  
Stand }  
Issue } 24-07-04

Fig./Abb. 1

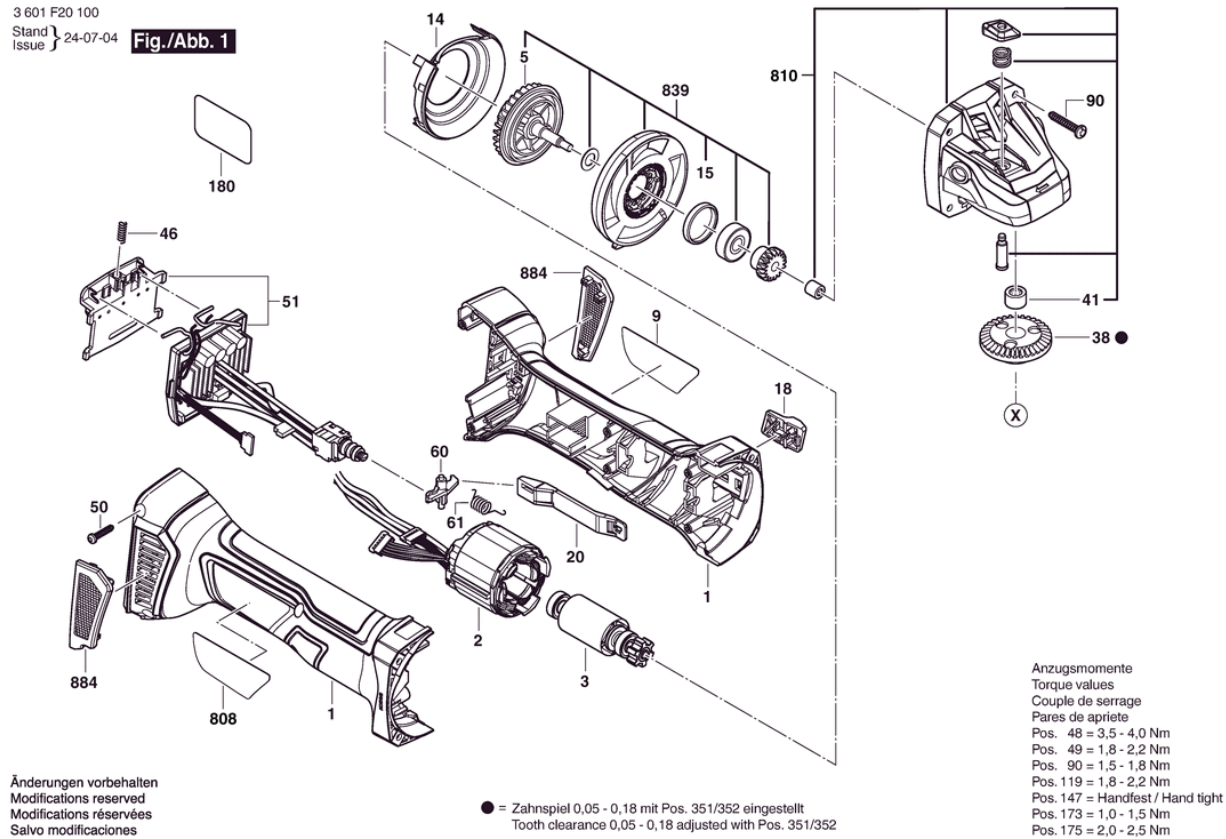


Illustration - Type - E

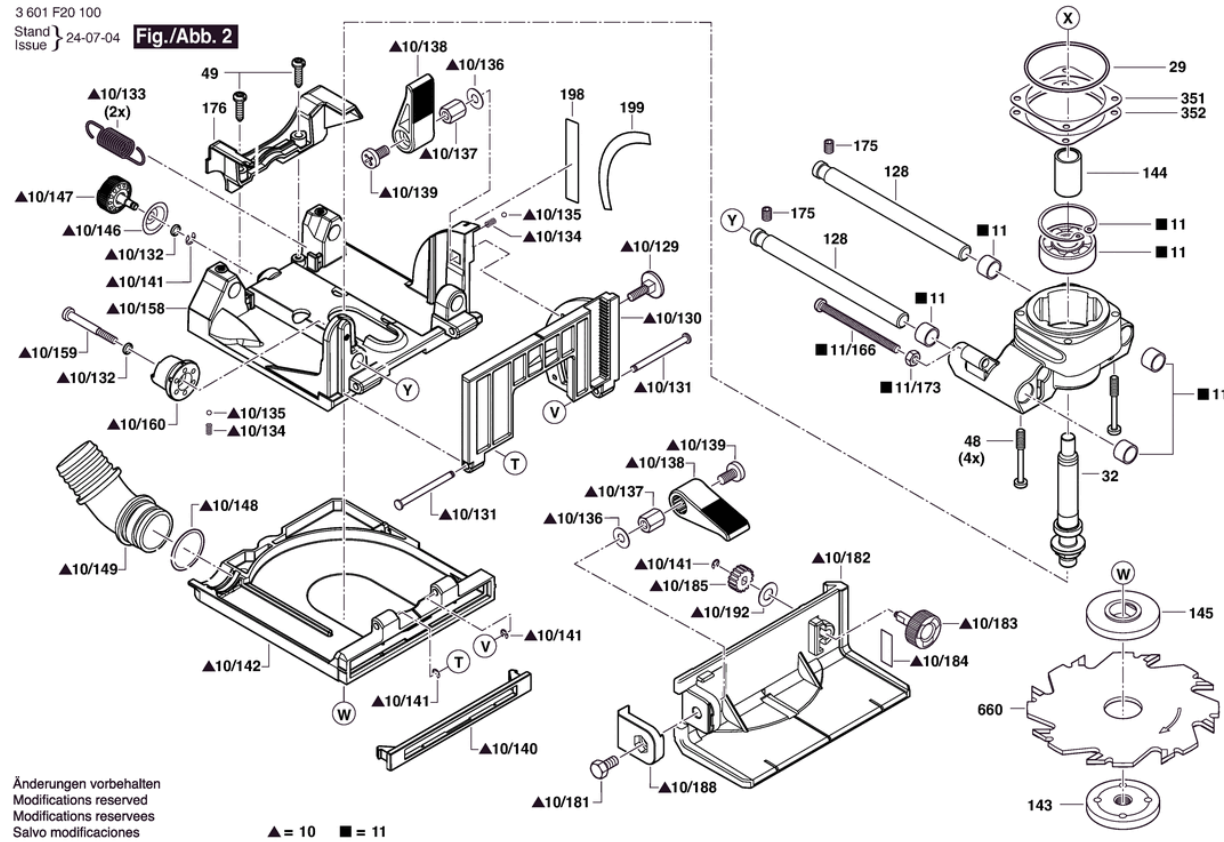
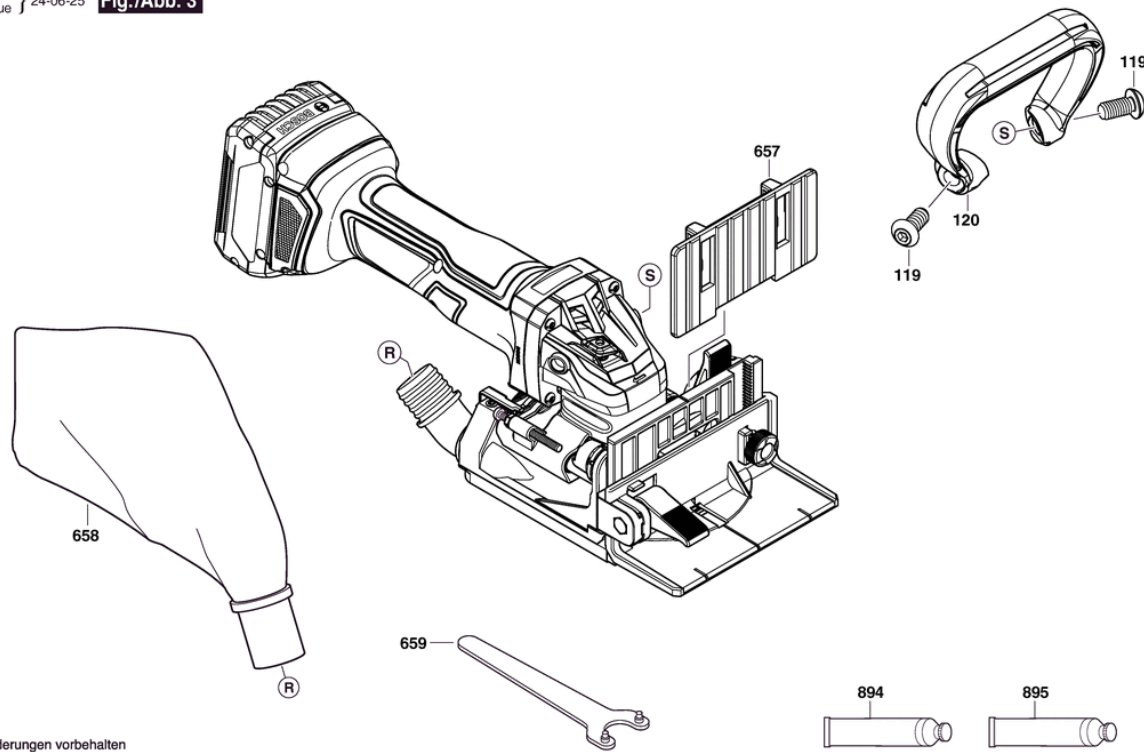


Illustration - Type - E

3 601 F20 100  
Stand }  
Issue } 24-06-25 **Fig./Abb. 3**



Änderungen vorbehalten  
Modifications reserved  
Modifications réservées  
Salvo modificaciones

## Spare parts list

Item	Part Number	Description	Illustration
1	1 619 P15 044	Motor Housing	1
2	1 600 A01 A6N	Stator	1
3	1 600 A01 A6S	Rotor	1
5	1 619 P15 054	Fan	1
9	1 601 11C 5ET	Manufacturer's nameplate	1
14	1 600 591 065	Air-Deflector Ring	1
15	1 600 206 025	Rubber Ring	1
18	1 619 P15 338	Switch Handle	1
20	1 619 P15 050	Adjusting Slide	1
38	1 619 P15 331	Crown Gear	1
41	1 600 200 029	Plain bearing	1
46	1 609 280 477	Compression Spring	1
50	2 609 110 201	Torx Flat-Head Screw 3X16	1
51	1 600 A01 NC3	Electronics Module	1
60	1 619 P15 795	Reverse-Transfer Lever	1
61	1 619 P15 806	Torsion Spring	1
90	2 603 490 024	Torx Oval-Head Screw 4X25	1
808	1 601 11A D37	Nameplate	1
810	1 619 P16 238	Gear Housing	1
839	1 619 P16 235	Bevel Gear Shaft	1
884	1 607 000 CA9	Filter Unit	1
10	1 600 A02 LT3	Face milling cutter	2
10/129	1 600 A02 LP5	Round-Head Bolt	2
10/130	1 600 A02 LM8	Frame	2
10/131	1 600 A02 LN7	Straight Pin	2
10/132	1 610 210 043	O-Ring 4,0X1,5 MM	2
10/133	1 600 A02 LP9	Extension Spring	2
10/134	1 604 612 05E	Compression Spring	2
10/135	1 600 A02 LN8	Ball	2
10/136	1 600 A02 LP4	Shim ring	2
10/137	1 600 A02 LN9	Hex Nut	2
10/138	1 600 A02 LP0	Tensioning Lever	2
10/139	1 600 A02 LP6	Oval-Head Screw	2
10/140	1 600 A02 LN4	Rubber stop	2
10/141	1 600 150 047	Spring retaining ring	2

## Spare parts list

Item	Part Number	Description	Illustration
10/142	1 600 A02 LN0	Housing Base	2
10/146	1 600 A02 LP1	Sealing washer	2
10/147	1 600 A02 LP2	Screw Plug	2
10/148	1 600 210 0B9	O-Ring	2
10/149	1 600 A02 LN5	Vacuum Connection	2
10/158	1 600 A02 LM9	Upper Housing	2
10/159	1 603 410 01U	Socket head cap screw	2
10/160	1 600 A02 LN6	Depth-Gauge	2
10/181	1 603 435 0A8	Hex Screw	2
10/182	1 600 A02 LN1	workpiece stop	2
10/183	1 600 A02 LP3	Knurled Thumbscrew	2
10/184	1 601 200 00N	Leaf Spring	2
10/185	1 606 300 01N	Toothed Gear	2
10/188	1 600 A02 LN2	Clamping Piece	2
10/192	1 600 100 631	Shim 0,5 MM THICK	2
11	1 600 A02 LT4	Intermediate Flange	2
11/166	1 600 A02 LM5	Stop Screw	2
11/173	1 600 A02 LM6	Hex Nut	2
29	1 619 P02 820	O-Ring 44,0X1,0 MM	2
32	1 600 A02 N5H	Spindle	2
48	3 603 435 055	Torx Oval-Head Screw	2
49	2 914 491 410	Thread-forming tap. Screw M4X16	2
128	1 600 A02 LP7	Straight Pin	2
143	1 600 A02 7JS	Round Nut	2
144	1 600 A02 LR2	Spacer Sleeve	2
145	3 605 700 154	Clamping-Flange Ø 22 MM	2
175	2 610 924 685	Adjusting Screw	2
176	1 600 A02 LR0	Cover	2
198	1 601 11C 5CS	Sticker	2
199	1 601 11C 5CT	Sticker	2
351	1 619 P02 821	Shim 0,1 MM	2
352	1 619 P02 822	Shim 0,2 MM	2
660	3 608 641 013	Side-Milling Cutter Ø 105X22X4 MM, Z=8-HM	2
119	1 619 P07 611	Hex Screw	3

**Spare parts list**

<b>Item</b>	<b>Part Number</b>	<b>Description</b>	<b>Illustration</b>
120	1 605 132 1AE	Handle	3
657	1 600 A02 LR1	Intermediate Plate	3
658	1 600 A02 UW6	Dust Bag	3
659	1 607 950 052	Pin-Type Face-Wrench	3
894	1 615 430 020	Grease Tube 225 ML	3
895	1 605 430 003	Grease Tube 225 ML	3